



Established 1925

KANSAS GEOLOGICAL SOCIETY

BULLETIN

Volume 90 Number 1

January—February 2015

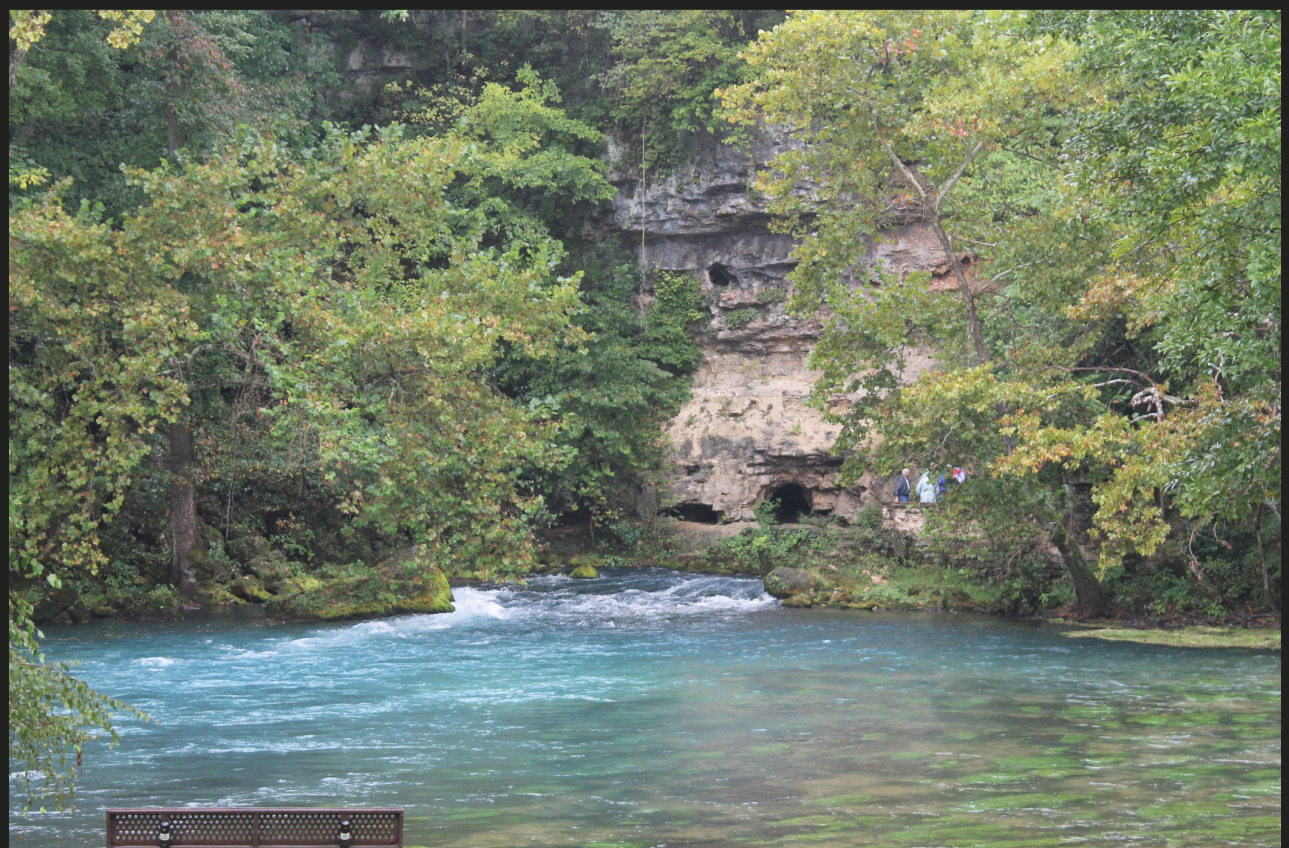
IN THIS ISSUE

Honorary Profile:
Robert O'Dell
Page 17

Memorial:
Jerry Haile
Page 18

**ON GEOLOGY, HISTORY, AND
VINICULTURE ALONG THE
MIGHTY MISSISSIPPI RIVER
IN MISSOURI**

Sal & Chellie Mazzullo
Page 10



Robert F. Walters Digital Library

The most complete source for Kansas data

Day or Night
You can get to the data as you need it

www.kgslibrary.com

To Join: call 316-265-8676

The screenshot displays the Robert F. Walters Digital Geological Library website. The main content area features a table of well records with columns for Well No., Spot, Location, H.S., E.W., Spud, Completion, Depth, E.L.B., E.L.P., E.L.G., and Status. The table lists several wells in Comanche County, Kansas, including well 10-215-16W.

Well No.	Spot	Location	H.S.	E.W.	Spud	Completion	Depth	E.L.B.	E.L.P.	E.L.G.	Status
10-215-16W	230	PSL	1900	FEL	12/01/1967		5100	3004			
10-215-16W	440	PSL	1320	FEL	12/05/1960		4990	2083			
10-215-16W	2310	PSL	1320	FEL	12/05/1960		5025	2052			
10-215-16W	1320	PSL	1320	FEL	06/01/1964		4650	2037			
10-215-16W	1320	PSL	1320	FEL	07/03/1963		5465	2040			
10-215-16W	4290	PSL	2070	FEL	02/07/1963		4690	2006			

Below the table, there are several preview windows. One window shows a 'Completion Card - IOG' for well 10-215-16W, detailing well parameters and completion data. Another window shows a 'Well Log' for well 10-215-16W, including a log of test data and a 'LATEROLOG SURVEY' section. The log includes details such as 'COUNTY - COMANCHE', 'LOCATION SEC. - 10-215-16W', and 'WELL - BARSKRIFE NO. 1 "A"'. The log also features a 'K.G.S. LIBRARY' logo and a 'LATEROLOG SURVEY' section with various data points and a signature.

Table of Contents

Features

Featured paper.....	10
Honorary Profile	17
Memorial	18

Departments & Columns:

KGS Tech Talks	4
President's Letter	7
Advertiser's Directory	8
From the Manager.....	9
KGS Board Minutes	10
Professional Directory	19 & 20
Exploration Highlights	24 & 25
Kansas Geological Foundation Memorials.....	26

ON THE COVER:

The spring at Big Spring State Park a few miles south of Van Buren, Missouri. The rocks in the background are the Cambrian Eminence Dolomite. Note the several cave openings above the spring that likely also periodically serve as water-exit conduits. See full article on page 10.

CALL FOR PAPERS

The Kansas Geological Society Bulletin, which is published bimonthly both in hard-copy and electronic format, seeks short papers dealing with any aspect of Kansas geology, including petroleum geology, studies of producing oil or gas fields, and outcrop or conceptual studies. Maximum printed length of papers is 5 pages as they appear in the Bulletin, including text, references, figures and/or tables, and figure/table captions. Inquiries regarding manuscripts should be sent to Rebecca Radford, manager@kgslibrary.com or mailed to 212 N. Market, Ste. 100, Wichita, KS 67202. Specific guidelines for manuscript submission appear in each issue of the Bulletin, which can also be accessed on-line at the Kansas Geological Society web site at <http://www.kgslibrary.com>

SOCIETY Technical Meetings

2015 Technical Talks

Jan. 7— *“Potential Strike-Slip Faulting in the basement of SW Kansas”* - Dennis Hedke & Lynn Watney

Jan. 20— *“Reexplore Micrologging”* - Richard Leeth

Jan. 27— *“Using PetroBase Explorer to mine data, create maps and generate production plots from Kansas Geological Survey Online well and production data ”* - Kyle Stephenson

Feb. 3— *“KU Student Field Studies”* - Dr. Anthony Walton’s Petroleum Class:
Chris Abshire and Jerome Youngers, Weeks North Field, Cherokee and Conglomerate, Ness County.

Teddy Jones and Reed Waldon, Bollig Field, Kansas City L-Zone, Graham County.

Briar Tormey and Chad Thomas, Don and Don West Fields, Mississippian, Hodgeman County.

Feb. 17— *“History of the 19th Century Baku oilfields of Russia in contrast to Spindletop”* - Ray Sorenson

Mar. 3— *“Woodford Shale as a Source/Reservoir Rock”* - Brian Cardott

Apr. 9— (Thursday) - **Fort Hays State Student Presentations**

Apr. 21— *“TBA”* - Dr. Jim Puckette

May 26— **WSU Student Field Studies**—Larry Richardson’s class

For More Information or suggestions of speakers please contact Dave Clothier: dave@mccoypetroleum.com

Please remember to check the website for the most up to date information on Technical Talks
<http://www.kgslibrary.com/techtalks.cfm>

*Tech Talks are held at Landmark Square
212 N. Market—4th floor
In the Wisdom Center*



Note: For those geologists who need 30 points to renew their licenses, there will be a sign-in sheet at each presentation and also a certificate of attendance.



BOARD OF DIRECTORS

PRESIDENT

Frank Mize

PRESIDENT-ELECT

Tim Hellman

SECRETARY

Chuck Brewer

TREASURER

Leah Kasten

DIRECTORS

Brian Fisher

Ted McHenry

Paul Gunzelman

ADVISORS

Alan DeGood

M.L. Korphage

COMMITTEE CHAIRMEN

Advertising

Kent Scribner

Advisory

Alan DeGood

M. L. Korphage

Annual Banquet

Bob Bayer

Budget Committee

Leah Kasten

Bulletin

Rebecca Radford

Continuing Education

Robert Cowdery

Distinguished Awards

Brian Fisher

Environmental

Kent Matson

Field Trip

Larry Skelton

Fishing Tournament

Randy Teter

Future Plans

Chuck Brewer

Golf

David Barker

Historian

Larry Skelton

Investment

Leah Kasten

Library

Roger Martin

Ted Jochems

Membership

Larry Friend

Nomenclature

John H. Morrison, III

Picnic

Wes Hansen

Public Relations

Robert Cowdery

Shooting Tournament

Larry Richardson

Technical Program

Dave Clothier

Ticket Sales

Bill Shepherd

A.A.P.G. DELEGATES

Ernie Morrison
2018

Douglas Davis
2018

BULLETIN STAFF

EDITOR

Rebecca Radford—Interim (316) 265-8676

ADVERTISING

Kent Scribner

Stelbar Oil Corp. (316) 264-8378

PROFILES/MEMORIALS

Robert D. Cowdery

Consultant (316) 267-9030

EXPLORATION HIGHLIGHTS

John H. Morrison, III

Independent O&G (316) 263-8281

STATE SURVEY

Rex Buchanan

KS Geological Survey (785) 864-3965

SOCIETY NEWS

KGS Library

(316) 265-8676

EDITOR EMERITUS

Wes Hansen

(316) 263-7313

Larry Richardson

(316) 262-8427

K.G.S. LIBRARY

PHONE 316-265-8676 FAX 316-265-1013

email: frontdesk@kgslibrary.com or

Web: www.kgslibrary.com

LIBRARY MANAGER

Rebecca Radford 265-8676

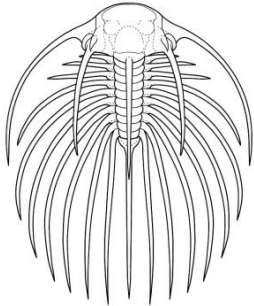
manager@kgslibrary.com

The KGS *Bulletin* is published bi-monthly by the Kansas Geological Society, with offices at 212 North Market, Wichita, Kansas 67202 Copyright 2014, The Kansas Geological Society. The purpose of the *Bulletin* is to keep members informed of the activities of the Society and to encourage the exchange and dissemination of technical information related to the Geological profession. Subscription to the *Bulletin* is by membership in the Kansas Geological Society. Limited permission is hereby given by the KGS to photocopy any material appearing in the KGS *BULLETIN* for the non-commercial purpose of scientific or educational advancement. The KGS, a scientific society, neither adopts nor supports positions of advocacy, we provide this and other forums for the presentation of diverse opinions and positions. Opinions presented in these publications do not reflect official positions of the Society.



Twenty-two Trucks Serving
Kansas—Colorado—Texas—Nebraska—Illinois

DST's
Back Pressure testing (G1 & G2)
Slick line services using the same Weatherford
Electronic Pressure Gauges used on DST's



1-800-728-5369

FAX 1-785-625-5620

www.trilobitetesting.com
trilobite@eaglecom.net

SHOPS LOCATED IN:

- Hays, KS
- Scott City, KS
- Pratt, KS
- Hugoton, KS
- Oberlin, KS
- Clay City, IL

CAN YOU NAME THE CRITTER?

Sponsored by Trilobite Testing, Inc.

Is your paleo up to date?

If you know the name of the trilobite, submit your guess via e-mail to manager@kgslibrary.com

Remember that *Trilobite Testing* is sponsoring your efforts, so be sure to thank Paul Simpson the next time you see him.

Bulletin committee members and PhD's in Paleontology are prohibited from entering.

Thank You Frank Mize
For identifying the last trilobite
Paradamesella typica

Now A new one



Meet the 2015 KGS Board of Directors



Frank Mize
President



Tim Hellman
President-Elect

Photo by AJ



Chuck Brewer
Secretary



Leah Kasten
Treasurer

Directors At Large



Ted McHenry



Brian Fisher



Paul Gunzelman

President's Letter

Dear Members,

Greetings to the members of one of the best if not THE best geological society in the country. Our finances are good, and we do have the best oil & gas based library on the planet. It is now your new board's job to see that that does not change in the upcoming year. My advisers are (in the event you haven't heard yet) are Maurice Korphage and Alan De-Good, two very strong leaders in our organization, with widely varied backgrounds. I have a very high degree of trust in these gentleman, and I know that many of you in the society do as well. I also have the privilege of having an excellent past president, Brian Fisher, to rely on, and an excellent board of directors, pictured on the previous page.



With respect to our library, we have recently expanded the space to allow greater storage of hard copies. Additionally, we have a fairly new initiative to get the eastern range data scanned. This will give us a much larger area of digital data, and an effective new income stream, not to mention the security of having a backup for the data. Be sure and check our web site for updated progress. Our library team is doing their best to keep up with the inflow of new data, and we are continually looking for new or more efficient ways to incorporate the data stored in the basement.

It is an honor to serve you as your president, and I look forward to the challenge this year will bring.

Frank S. Mize
President



KANSAS STATE UNIVERSITY

GEOLOGY
DEPARTMENT

GRADUATE EDUCATION
for active professionals

Through: Leading to:
Workshops Academic credits
Field Trips Certificates (pending)
Distance Education M.S. degree

With specializations in:
Petroleum Geology
Groundwater
Exploration Geophysics
Environmental Geochemistry

Information:
KSU Continuing Education: www.dce.ksu.edu
KSU Geology Department: www.ksu.edu/geology
KSU Graduate School: www.ksu.edu/grad
or e-mail George Clark, interim dept. head: grc@ksu.edu

ADVERTISER'S DIRECTORY

	<i>page</i>
Allied Cementing Company, Inc	23
American Energies Corp. Nitrogen Rejection	13
Breckenridge Exploration Company	15
Duke Drilling	23
GeoCare Services AAPG	17
GeoSteering	14
Kansas Geological Foundation	26
Kansas State University	8
Lockhart Geophysical	23
Lone Star Geophysical Surveys	16
MJ Systems	21
MBC Well logging	23
Murfin Drilling Company, Inc	23
Neuralog	15
PARAGON Geophysical Services, Inc	13
Pratt Well Service	15
Professional Directory	19-20
Sterling Seismic Services	13
Sunrise Oilfield Supply	23
Tomcat Drilling	23
Trilobite Testing	6
Walters Digital Library	2
Weatherford	27
Well Enhancement Services	14

Log in to
Walters Digital Library
At
www.kgslibrary.com

Log in as our guest
and see the Society's Database

A convenient way to see what
you might want to order!
Call or email your order to:
316-265-8676
frontdesk@kgslibrary.com

ADVERTISER'S RATES: 2015

Full Page	B&W	Color
6 issues	\$2,000	\$2,500
3 issues	\$1,080	\$1,325
1 issue	\$480	\$525
1/2 Page		
6 issues	\$1,000	\$1,500
3 issues	\$540	\$825
1 issue	\$225	\$350
1/4 Page		
6 issues	\$600	\$900
3 issues	\$325	\$525
1 issue	\$150	\$250
1/8 Page		
6 issues	\$300	\$500
3 issues	\$175	\$325
1 issue	\$75	\$185
Professional Ad (Business Card)		
6 issues	\$90	\$180

For one-time ads, call Rebecca at 316-265-8676

From The Manager

Dear Members,

I'm not sure anyone notices these things but if you look at the front of this issue of the Bulletin, you will see that it is volume 90, issue 1. That is 90 years of Society Bulletins. Remarkable. How many businesses are around this long? A round of applause for all of you who have kept this Society around and strong for over 90 years! I hope we can keep the young geologists joining and appreciating all that belonging to the Society can be.

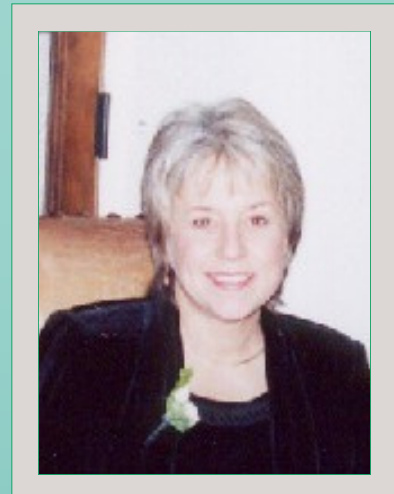
As we start into 2015, we are facing much lower oil prices and there is some talk and grumbling going on, wondering how long and how bad this downturn might be. We hope it doesn't last long of course. But I think if you re-read my first paragraph, you will recognize the strength you all have to maintain your love of geology and the search for petroleum.

Your library keeps working away at scanning more of our data and getting it incorporated into the Walters Digital library. We also keep adding data from the basement donations. Lots of new "old" stuff coming into the files. We also have lots of FREE maps that are sitting right outside my office—please come by and help yourself to some!

I hope to see most of you at our Annual Banquet, January 30th. We will be inducting Robert O'Dell as an Honorary Member. The banquet is also a time to catch up with old friends and to welcome the new 2015 board of directors. We have a very strong board coming into 2015, some who have served before graciously said they would serve again and we appreciate that. Your new board is pictured on page 6.

We had a nice holiday open house on December 19th. Thanks to all who came and all who helped make this a fun day!

Respectfully submitted,
Rebecca Radford
Manager



**Let Us Print Your Geo Reports
And Save Your Time For Finding More Oil & Gas
Top Quality Color Printing For Our Membership**

Email your files to: kgsorders@gmail.com

ON GEOLOGY, HISTORY, AND VINICULTURE ALONG THE MIGHTY MISSISSIPPI RIVER IN MISSOURI

Sal and Chellie Mazzullo
Petroleum Geological Consultants
Wichita, KS

In our opinion geology, history, and wine (and, of course, beer) go very well together. We decided a while back to take a break from our normal Caribbean or Italian vacations and tour the Mississippi River Valley area in southeastern Missouri, along the eastern edge of the Ozark Dome, in the effort to check out these three aforementioned aspects of the area. Our first stop on this trek, which we undertook in September of 2014, was in Hermann, Missouri. This picturesque little town sits mostly atop a bluff held up by Ordovician dolomites (Arbuckle equivalents) and it overlooks the broad Missouri River as it flows, laden with fine sediment, eastward toward its confluence with the Mississippi. We enjoyed wine, beer, and German food at a local winery there while pondering the origin of dolomite and dolomite reservoirs in the mid-continent. We were introduced there to the Norton grape, which is the officially recognized 'state grape' of Missouri which apparently grows well on karsted dolomites. We likewise pondered the multiple generations of subaerial exposure, weathering, and porosity development attending karstification that have been endured by and which have modified these Sauk Sequence rocks both here and in subsurface Kansas – that is, during the pre-Middle Ordovician, again in pre-Woodford time, locally in pre-Pennsylvanian time, and in on the Ozark Dome during most of the later Paleozoic, Mesozoic, and Cenozoic. No wonder caves and caverns abound in these rocks in Missouri.

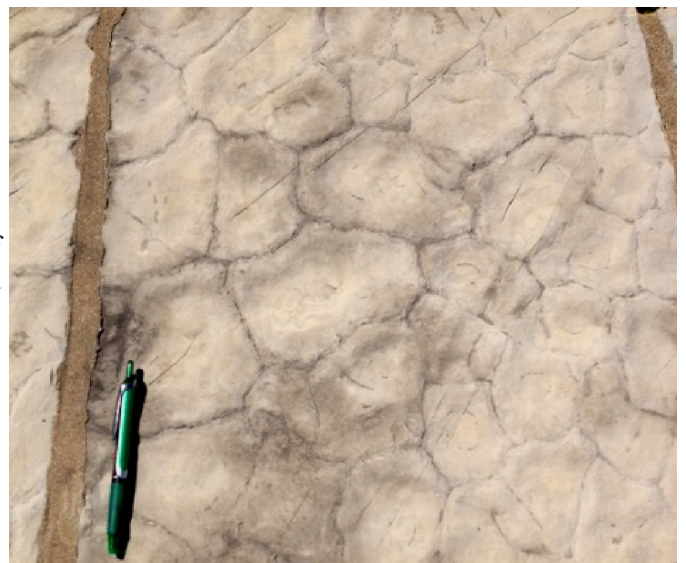


1-View into the cave formed in Lower Ordovician dolomite at a winery west of St. Genevieve.

had to learn these concepts the hard way. Towns close to Ste. Genevieve with names like Chester and Kaskaskia should stir some stratigraphic memories among some of the geologists reading this article. We stayed at a beautiful and historic B&B in Ste. Genevieve that has endured wars and floods for over 200 years. While in the area we visited several vineyards a few miles west of Ste. Genevieve and sampled their wines. The first winery featured a selection of reds and whites accompanied by cheeses and Sicilian biscotti, and even a cave on the grounds formed in Lower Ordovician dolomite in which saltpeter had once been mined (Photo 1). Dolomites, caves, wines, cheeses and biscotti...most definitely a proper geological mix. Later that day we tasted more vino at a beautiful winery whose walkway was adorned with quarried and cut facing stones of Lower Ordovician dolomite with magnificent desiccation cracks on bedding planes (Photo 2). The vertical sides of these slabs were algal-laminated and with birdseye vugs. It was the holy-trinity signature of tidal deposits like sedimentologist Al Fischer had described decades ago in Triassic

From there we headed eastward to the first organized European settlement immediately west of the Mississippi River – Ste. Genevieve, Missouri. It was founded in about 1735 by French Canadian colonists, and was located in an area then owned by the French (and later by the Spanish) and variously referred to as 'New France', 'Illinois Country', or 'the Upper Louisiana Territory'. History buffs will remember the Louisiana Purchase of 1803, which included land from the Mississippi River westward to the Rockies, encompassing Ste. Genevieve, and which doubled the size of the US. The town originally was built directly on the Mississippi River floodplain, but it was moved away from the river and onto adjoining low bluffs after the great flood of 1785. Terms such as 'floodplains' and 'cutbanks' mean a lot to geologists in terms of processes and risk assessments, but the lay population over 200 years ago

apparently



2-Bedding plane with desiccation cracks in tidal flat dolomite along the walkway at another winery near Ste. Genevieve. Pen for scale.

rocks in the Alps! Sal had to be dragged into the adjoining wine-tasting room as he babbled on enthusiastically about fenestrae, algal laminations, and diagenetic evidence of ancient tidal-flat sedimentological processes. Fortunately, the sight of large, stainless steel vats containing fermenting fruit-of-the-vine (Photo 3) quickly snapped him out of his geo-delirium. That evening we imbibed in some other beverages in a saloon that has been operating as such continuously for about 185 years.

The next day we drove across the river to the nearby town of Chester, Illinois (mentioned above) which is most famous for two things: first, for being within the type area of the Upper Mississippian Chesterian Series, and apparently more importantly for non-geologist types, for being the birthplace (in 1929) of ‘Popeye the



3-Stainless-steel vats with fermenting fruit-of-the-vine. Old-style wooden vats are being replaced here and in Europe by these implements, which allow for more precise control during the wine-making process.

Sailor Man’ and his comic cohorts (Photo 4), and also of their creator, Mr. E.C. Segar. It might also have become famous for being ‘*the outcrop on state penitentiary grounds where Sal could have been arrested for trespassing because he insisted on examining Chesterian-age rocks*’ had I not quickly hurried him away while he was going on and on about type localities, Upper Mississippian lithostratigraphy, and so forth. We then re-crossed the river back into Missouri and headed south of Ste.

Genevieve along the low bluffs adjoining the Mississippi. Visions of Tom Sawyer, Huck Finn, and their creator Mark



4-Roadcut of cross-stratified oolite-skeletal grainstone in the Mississippian St. Louis Formation along the Mississippi River just south of Ste. Genevieve.

Twain danced in our brains as we traveled along this historic waterway. At one point not too far from Ste. Genevieve we stopped to examine exposures of cross-stratified oolite-skeletal grainstones in the St. Louis Formation (Photo 4), which is the very same lithofacies that is productive at many oil fields in western Kansas. One of us would like to point out that Chellie stayed in the car at the exposure shown in Photo 4 because of all the poison ivy there.

Our next destination of the trip was downtown (= old) Cape Girardeau, which is right along the Mississippi River. But not to be worried, the city is “protected” from river flooding by a relatively high (~20 ft) wall, with some giant flood gates, that is adorned by many historical murals (Photo 5). The river was flowing quickly while we were there, and it was transporting abundant, very large, floating (and likely submerged) tree trunks (Photo 6) that were headed southward at a brisk pace toward the terminus of their journey, the modern Mississippi delta. Woody, carbonaceous debris is common in many fluvial and deltaic deposits in the stratigraphic record, and the Mississippi certainly served as an analog for that while we were there. Imagine the old paddle-boat captains having to deal with these hazards as well as cryptic sand bars during their journeys along this economically strategic waterway. “The Cape”, as Missourians refer to



5-Part of the flood wall with murals along the Mississippi River in Cape Girardeau. The wall is ~20 ft high. The two uniformed figures on the left are Union Generals U.S. Grant (on the left) and B.M. Prentiss (on the right). According to local historical records, or folklore, both men were erroneously sent at the same time to be the CO of the local Union garrison, and they argued over who should be the CO and Grant won. The central mural depicts one of the four Civil War forts around Cape Girardeau, and the mural on the right depicts some Confederate troops.

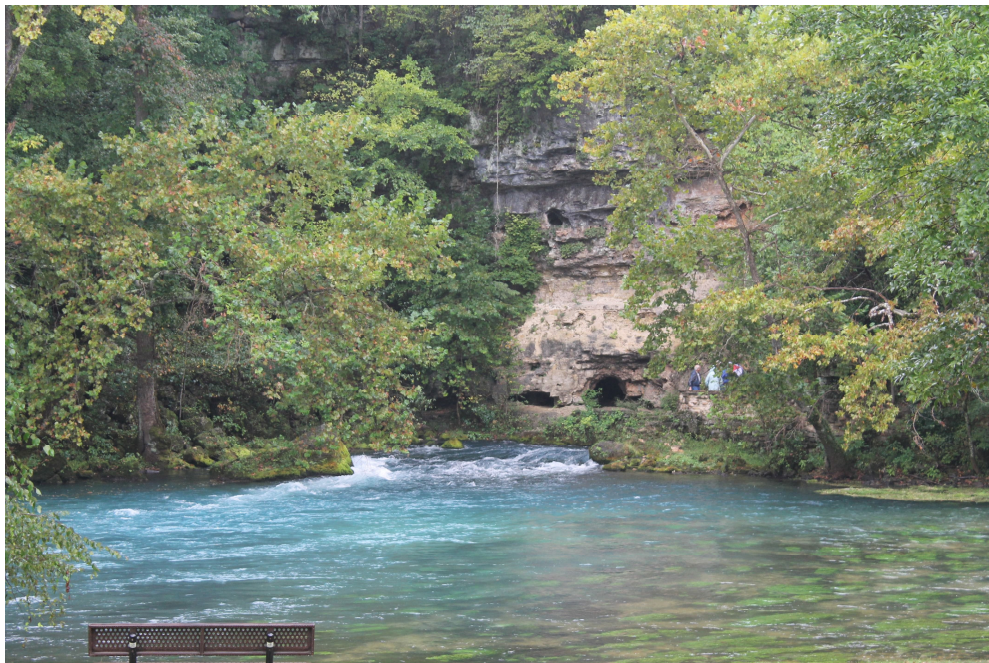
Cape Girardeau, is a lovely old city (initially founded about 1733 as a French-Canadian trading post site north of the present city) that figured prominently during the Civil War as a Union-held bastion surrounded by Confederate forces (see Photo 5). We imbibed adult beverages at a local pub that previously had served as General Ulysses S. Grant's headquarters during that war, enjoyed an antique car show on the day we arrived, and visited old Union Fort D. Four forts ringed the city during the Civil War, and they were named Forts "A", "B", "C", and "D"; only Fort D still stands today. During our stay at the Cape we variously dined on Cajun, Italian, Irish, and American food at different restaurants during our stay. We made a short (and somewhat nervous) day trip to visit the small town of New Madrid, Missouri south of Cape Girardeau, where some of the largest earthquakes in North America hit during 1811-1812. There is still clear evidence of earthquake-induced sand boils in many harvested crop fields in the area. If such large faults happened again today, millions of people and several large cities would be affected throughout the midcontinent.



6-Big logs floating down the fast-moving Mississippi River at Cape Girardeau.

After that it was time to head home to Wichita. We drove west on U.S. Highway 60 across southern Missouri and the very scenic Ozarks, and we stopped in the town of Van Buren where the crystal-clear, spring-fed Current River crosses the highway. From there we headed south about 4 miles to Big Spring State Park which houses one of the largest natural springs in the Ozarks (Photo 7) that feeds into the Current River. Here, water discharges along the foot of a bluff from a vast network of subterranean karst cavities in Cambrian dolomites of the Eminence Formation. Average rate of discharge is about 470 cubic feet per second, which equates to close to 275 million gallons per day. Rates three times as great have been measured at times in the past. Imagine an oil reservoir with that kind of permeability? You know at least one – the El Dorado Field in Butler County, KS.

Well, this is the end of our tale; hope you enjoyed it and the photos. No references provided. Only memories.



7-The spring at Big Spring State Park a few miles south of Van Buren, Missouri. The rocks in the background are the Cambrian Eminence Dolomite. Note the several cave openings above the spring that likely also periodically serve as water-exit conduits.



Providing Quality Seismic Since 1993

Visit our website at
www.parangogeo.com



3500 N. Rock Rd., Bldg. 800, Wichita, KS 67226 316-636-5552
paragon@parangogeo.com

WANTED



LOW BTU GAS to Buy or Treat

www.NitrogenRejectionUnit.com



American Energies Corporation
 316-263-5785

Experience, Integrity, Innovation...



SEISMIC SERVICES, LTD.
www.sterlingseismic.com

**Renegade Seismic Studio Refraction Statics
 Z-White Spectral Enhancement
 Tsunami Pre-Stack Time Migration**

Projects from one square mile "Postage Stamp" 3Ds to the 1,100 square mile nine 3D merge through PSTM we completed in 2006, no project is too small or too big. All projects are given the same attention to detail that we have become known for.

**Structural or stratigraphic, we've got the experience
 to provide you with a superior dataset.**

303-347-9011



WOULD YOU LIKE TO INCREASE YOUR PRODUCTION AT A FRACTION OF THE COST OF HORIZONTAL DRILLING?



Well Enhancement Services, LLC is jetting laterals utilizing new technology and coiled tubing. We now have the ability to place hundreds of gallons of acid hundreds of feet away from the well bore. This allows us to not only enhance existing production but to produce reserves previously unreachable. It has established itself by repeatedly increasing production in both new and existing wells. Contact us for more information, questions or to schedule your next well with **WES**.



Please Contact Us:

Phone: (785) 625-5155

Fax: (785) 625-4151

Field: (785) 259-4638

wesofhays@hotmail.com
Box 87, Schoenchen, KS 67667

“Tap into success.....with WES”

www.**GeoSteering**.com

281-573-0500
info@geosteering.com

Free introductory consultation with modeling: let us demonstrate whether images or propagation resistivity could add value to your well.

Personnel with degrees & 20+ years of oilfield experience

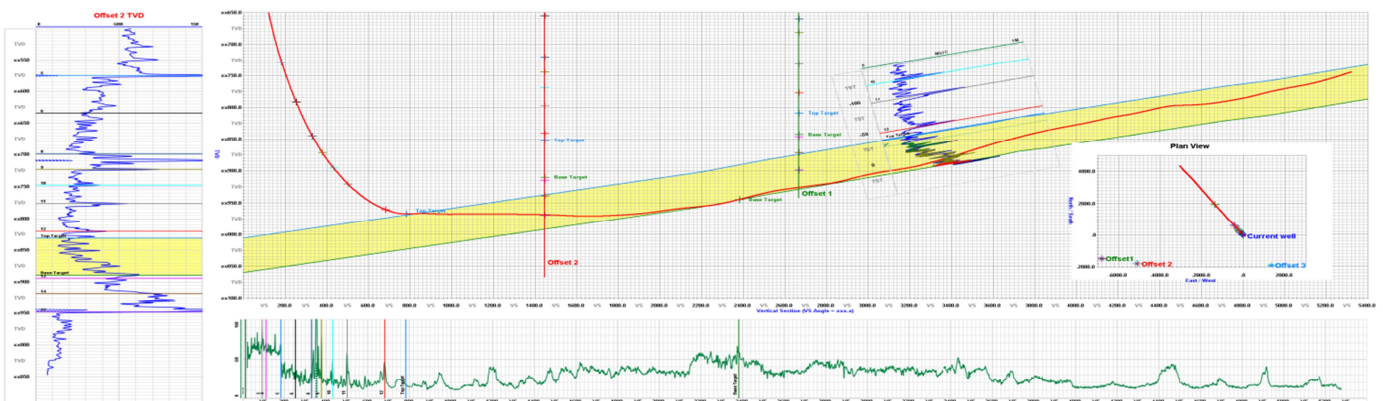
Proprietary software

TST interpretation for GR only jobs

Image displays / interpretation for jobs with azimuthal GR, resistivity or density

Resistivity modelling / interpretation for jobs with LWD propagation resistivity

Real-time (always)





Call us 24
Hours-A-Day
620-672-2531



Complete Well Service

Since 1946

P.O. Box 847
Pratt, Kansas 67124

Kenneth C. Gates
President

Kevin C. Gates
Vice President

1-800-660-7974
Fax: 620-672-5902

Member KIOGA /AESC

Equipment yard & field office:
1 3/4 miles North on Highway K-61 from 54 & K-61 Junction

- Experienced Crews · Rod & Tubing Service · Workover & Completions · Swab Tanks
- Pole Masts-Single and Double Derricks · Air Foam Unit · Monitor & Water Well Drilling
- Reverse Circulating Pump & Power Swivel Equipment · Statewide Oilfield Hauling
- Environmental Cleanup · Vacuum Trucks/Water Trucks · Dirtwork-Dozers, Grader, Backhoe

Hydrovac Excavation Service

- Cleaning cattle guards
- Mud tank cleaning
- Potholing · Trenching
- Pipeline Crossings

www.prattwell.com



Eagle Vision Video
Well Inspection

Neuralog
Turning Paper Into Petroleum

Bryan Mills
Regional Sales Manager

Solutions for Today's Geoscientists

- Scan, Print & Digitize - Logs & Maps
- Geological Interpretation
- Master E&P Data Management

1.281.240.2525

bmills@neuralog.com · www.neuralog.com



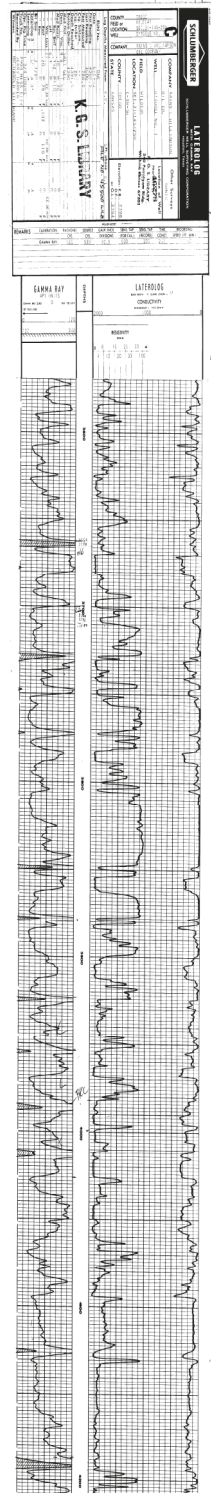
SEISMIC ACQUISITION

Check us out at www.breckex.com

Breckenridge Exploration Co., Inc.
Highway 180 E
P.O. Box 789
Breckenridge, TX 76424
Bus: (254) 559-7566

Denver Colorado Office
600 17th Street, Ste. 2800 S
Denver, Colorado 80202-5428
Bus: (303) 563-5301
Mob: (254) 559-0587

Sensible Seismic Acquisition in the Mid-Continent and the Rockies



The Kansas Geological Society maintains its ownership and copyright when converting library log files to LAS

*The KGS Library is pleased to
announce a new service*

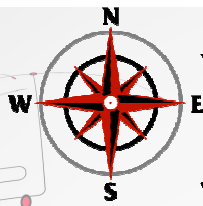
Creating
LAS files
from our logs
or yours

**\$20.00 per
curve!!**

Quick
turn-around

Send us your log file
or tell us which of
ours you would like
converted.

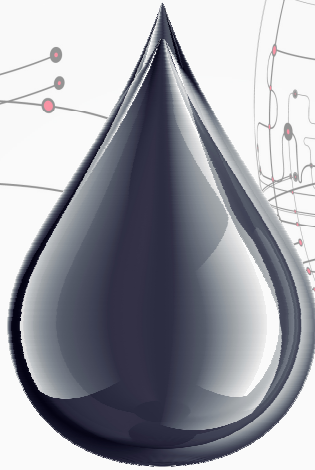
316-256-8676



LSGS

LoneStar Geophysical Surveys

It's Real Simple. It's Real Effective.



Locating every last drop.



Superior Seismic Acquisition System



Data Recording 2D, 3D, 4D & VSP



AHV-IV™ Commander 364



Permitting Services



HSE Management System



Front-End Services



Shot Hole Drilling



Brush Clearing



Chainsaw Crews



Heliportable



Submit a bid request online:

www.lstargeo.com

441 So. Fretz Avenue Edmond, Oklahoma 73003 (O) 405.726.8626 (F) 405.285.8521
lsgs1@lstargeo.com

Honorary Profile — Robert O'Dell

This year the Kansas Geological Society is honoring one of its most prominent and active members who has used his time and efforts to promote the society and the profession of geology.

Bob was born in the Wichita area in 1955 and lived here all of his life. His father was employed by Beech as an Aeronautical Engineer. His mother Betty was a housewife and later active in real estate. His older sister, Linda, who is married to KGS member Jim Robbins, is active in real estate.

Bob attended grade school and junior high school at Pleasant Valley and graduated from Wichita Heights High School in 1973. He then attended Wichita State, graduating in 1979. In September of 1980, he married Debbie VanHaverbeke of Wichita. They have three daughters: Melissa, Kayla, and Shauna all residing in Wichita. He has four grandchildren.



Bob commenced his geologic career while still enrolled at Wichita State. At WSU he appreciated the instruction and association with Dr. John Gries. His first employment during this period was with Woolsey – Brown as a draftsman. Later at Raymond Oil as a draftsman, but after graduation he was employed as a petroleum geologist there. He continued at Raymond until 1982 when he joined Sid Tomlinson as a geologist. He worked with Tomlinson until 1987 when he became a consultant. He remained a consultant until 1989 when he joined McCoy Petroleum. He was employed at McCoy until 1998 working primarily on exploration in SW Kansas.

Bob then worked for the Kansas Geological Survey from 1998 until 2000. Since 2000, he has been an Independent. During this period he has focused a lot of his efforts on the Central Kansas Uplift, as well as work in Ness, Trego and Rush counties. A lot of his work during this period has been in conjunction with Dave Callewaert and Sid Tomlinson.

He has provided outstanding leadership to the KGS serving as Vice President in 1994 and President in 1995. In addition he has provided additional support: serving on the Board of Directors on two occasions, chairman for the Annual Banquet, chairman of the Continuing Education Committee, chairman of the Distinguished Awards Committee, Technical Program Chair, member of the Future Plans Committee, and member of the Insurance Committee. He also has been Vice President and on the Board of Kansas Geological Foundation.

Along with his wife, Debbie, he works as a volunteer for Lord's Dinner and Meals on Wheels. Bob feels his geological mentors include Chuck Immich, Morris Korphage, Bill Jackson and Roger McCoy.

Truly this selection of an outstanding member, who is most deserving, is a very appropriate choice.

*Plan To Attend
KGS Annual Banquet
Friday Evening, January 30, 2015*

Memorial - Jerry Haile

Jerrold Wayne “Jerry” Haile March 24, 1962 to September 19, 2014. Jerry attended Grade School in Alden, Kansas and High School in Sterling, Kansas. He was an avid outdoorsman, with a love of hunting and camping. He also was active in Boy Scouts of America and achieved Eagle Scout. He was greeted by President Gerald R. Ford after attaining the honor. In his youth, Jerry worked on the family farm and later when he was old enough to operate excavation machinery, he was employed by Haile Dirt Construction Company, which was owned and operated by his father. Jerry also was very active in his local community and was an Emergency Medical Service technician, and was well versed in First Aid.

Jerry Graduated from Sterling High School May 1980 and started his studies at Wichita State University in August of the same year. While attending WSU, Jerry served on the Campus Security Department for better than one year. He joined Alpha Tau Omega Fraternity and was an active member. He started his Geological career while attending WSU by obtaining a Geological Assistant position at Range Oil Company in 1984. He supported the exploration geologists there and also was introduced to well watching while in their employe. After graduating from WSU 1986 he prospected for Oil and Gas and watched wells while employed by Rains and Williams Oil Company from 1986 to some time in 1988.

The downturn in the Oil and Gas Industry of 1986 affected many geologists and Jerry was impacted also. He obtained a position with HWS Consulting Group in Wichita Kansas as a Project Geologist in 1988. At HWS he wore several hats, one day he would be on a soils drilling rig, overseeing environmental and geotechnical investigations and the next he would be in the soils laboratory performing materials attributes testing. He also was responsible for the reporting of the results of the testing. Jerry remained with HWS just short of two years and then joined Terracon Consultants, Inc., in Wichita, Kansas. He served as a Project Manager with responsibilities, which included but not limited to, Phase I Environmental Site Assessments, Phase II Intrusive Site assessments, Underground Storage Tank Removals and subsequent remediation of soil and ground water, Hazardous Waste characterization and permitting for disposal, Solid Waste management planning and Landfill Feasibility and Siting studies. Jerry was responsible for the field personnel who were assigned to the above referenced projects. Jerry transferred to the Terracon Colorado Springs office and served as a Senior Project Manager.

Jerry Served as the Director of El Paso County Environmental Services Director from mid 1997 to May 2008. While working in that position, he supervised the overall environmental and natural resources compliance for El Paso County’s operations as supported by its 2,300+ employees. His responsibilities included: evaluation and recommendation of strategic environmental and natural resource policies and programs to the Board of County Commissioners, implemented policies and programs as directed by the BoCC, as well as management and oversight of a multi-disciplined staff of environmental professionals in the department’s Environmental, Natural Resources and Solid Waste Divisions. Some of his other responsibilities are not included here, but he did serve as a member of the El Paso County Sheriff’s Office Hazardous Material Response Team in the capacity of Liaison, Safety, and Information Officer as well as Operations, Planning and Logistics Section Chief.

He worked for Tetra Tech, Inc., in Omaha Nebraska as an Environmental Team Leader from June 2008 to July 2009. His duties and responsibilities were of the same scope when he was Senior Project Manager with Terracon. In August 2009 Jerry returned to Terracon as their Environmental Department Manager in Cedar Rapids, Iowa. He served in that capacity until April 2012 when he was offered the opportunity to be a Senior Associate/Environmental Department Manager in Wichita, Kansas. He served in that position until April 2014. He Joined Geotechnical Services Inc., in June 2014 as their Senior Geologist/Environmental Department Manager.

Jerry married Nellie Ablah in January 1986 and together they were raising five children, Ashley , Jeremiah, Zechariah, Erin and Gracie. He was always active in which church they were attending and took several missionary trips with the youth groups. He was a compassionate man with a huge heart and would do anything for his family and friends. This author is also certain he would give the shirt off of his back to a stranger and help him put it on. He always had a big smile and a kind word for all who he met. Jerry brought joy and laughter to everyone who was fortunate enough to know him. He is loved immensely and is missed dearly. Preceded in death by brother Phillip, Survived by his wife Nellie: parents Guy (Fuzz) & Bonnie (Morley) Haile, Sterling, Kansas; children Ashley Tanner (Jedidiah), San Angelo, Texas, Jeremiah (Kylie), Sterling, Kansas, Zechariah, Dallas, Texas, Erin, Wichita, Kansas, Gracie, Wichita, Kansas; Delanie Haile; granddaughter.

—submitted by Bob Bayer



PROFESSIONAL DIRECTORY

Kirk Rundle
Consulting Geophysicist

*3D Seismic Design, Acquisition to Processing QC,
Interpretation and Analysis, Subsurface Integration*
7340 W. 21st. N., Ste. 100
Wichita, Kansas 67205

Office: 316-721-1421 Fax: 316-721-1843
Email: kirk@rundlegeo.com

ROGER L. MARTIN
Independent Petroleum Geologist

200 E 1st St, Ste 405, Wichita, KS 67202

Office 316-833-2722 Cell: 316-250-6970
KS Field Cell: 316-655-1227
Fax: 316-425-3829
Email: rogermartingeo@yahoo.com


Blue Ribbon Drilling, LLC
PO Box 279, Dewey, OK 74029

Phone and Fax: 918-534-2322
John's Cell Phone: 918-440-9639
Larry's Cell Phone: 918-440-9638
Jeff's Cell Phone: 918-440-9647
Email: johnroutree@bratco-operating.com

ALFRED JAMES III
Petroleum Geologist
Kansas - Colorado - Utah

200 W. Douglas, Ste. 525, Wichita, Kansas 67202

SIPES # 1111
Office (316) 267-7592
alfred.james55@yahoo.com



Scott Banks
Petroleum Geologist
banksb@aol.com
Cell: 316.253.8550

1700 N. Waterfront Pkwy.
Bldg. 300 • Suite C
Wichita, KS 67206

Phone: 316.558.5262
Fax: 316.558.5263

Banks Resources

M. Bradford Rine
Honorary Life Member—Kansas Geological Society

*Licensed Geologist—KS, #204
Registered Professional Geologist—Wyo. # 189
Certified Geologist—A.A.P.G. # 2647
S.I.P.E.S. # 1584 S.P.E. #109833-4*

PROSPECT EVALUATION • PROSPECT GENERATION
WELLSITE SUPERVISION • EXPERT TESTIMONY • OPERATIONS
PROPERTY EVALUATION • RESERVOIR STUDIES
DRLG./COMP. CONSULTATION

Suite 415 Office: (316) 262-5418
100 S. Main Fax: (316) 264-1328
Wichita, KS 67202 Cell: (316) 250-5941

WESLEY D. HANSEN
Consulting Geologist

Well site Supervision • Geologic Studies
212 N. Market, Ste 257
Wichita, Kansas 67202
Off: (316) 263-7313
Mobile: (316) 772-6188
whansen4651@sbcglobal.net



Paul Gunzelman
President/Geologist

Wichita, Kansas 316.634.6026
email p.gun@sbcglobal.net



KEVIN L. KESSLER
INDEPENDENT/CONSULTING PETROLEUM GEOLOGIST

WELLSITE SUPERVISION • GEOLOGIC RESEARCH
OIL & GAS PROSPECTS
KANSAS & EASTERN COLORADO

MAILING ADDRESS PHONE
1199 N. PONDEROSA RD. RES.: (316) 522-7338
BELLE PLAINE, KS 67013 MOBILE: (316) 706-6636
EMAIL: kessler1199@aol.com

MELLAND ENGINEERING, INC.
Petroleum Engineering & Geological Consulting

James E. Melland, P.E., P.G.
President

Office: (620) 241-4621 Fax: (620) 241-2621


jamesm@mellandengineering.com
www.mellandengineering.com

P.O. Box 841, McPherson, KS 67460

KGJ ENTERPRISES

Contract Oil & Gas Accounting &
Office Management

Kathryn G. James, MBA (316) 775-0954
4278 SW 100th ST. (316) 250-5989
Augusta, KS 67010 kgjames@onemain.com



Steve Van Buskirk
Petroleum Geologist

Van Buskirk Geo-Consulting

15171 Ridgfield Ln Home: 719-487-8297
Colorado Springs, CO 80921 Cell: 719-393-2900
and Nexleveline@msn.com
514 Rumsey
Kiowa, KS 67070 Available for Well site work



Geotech & Design Services

7171 Highway 6 North, #202
Houston, Texas 77095

Data digitizing, drafting & computer graphics



Tel: (281) 858-7100
Fax: (281) 500-8534

heather.wilson@geotechmap.net

Heather Wilson
Account Manager

www.geotechmap.net

Mark Your Calendar
KGS Annual Banquet

Friday, January 30th

Inducting into
Honorary Membership

Robert O'Dell



We Invite You
To join

Kansas
Geological
Foundation

*\$50.00 membership is
tax deductible*

Call 316-265-8676

Or send checks to:
Kansas Geological Foundation
212 N. Market, Ste. 100
Wichita, KS 67202

The Following Are For Sale

Kansas Completion Cards:
Several sets (call for more information)

Oklahoma Completion Cards:
2 sets—entire state

Nebraska Completion Cards—West ranges

New Mexico Completion Cards

North Dakota Completion Cards

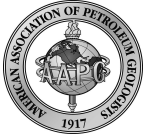
Utah Completion Cards

Microfiche Electric Logs
Kansas
Oklahoma
Texas

Geological Office Furniture:

- 8-drawer completion card cabinets—21 available
- 7-drawer cabinets—10 available
- Map cabinets—metal—2 available
- Map racks—different sizes—6 available

Call: 316-265-8676
Ask for Ted



Security for AAPG Members
& Their Families
Through Group Insurance

*Life
Health
Dental
Disability
Auto and Homeowner
Supplemental Plans*

AAPG's
GeoCare Benefits Insurance Program
P. O. Box 9159
Phoenix, AZ 85068-9159
800-337-3140
E-mail: geocarebenefits@agia.com
www.geocarebenefits.com

**Kansas Geological Foundation
Video / DVD Collection**

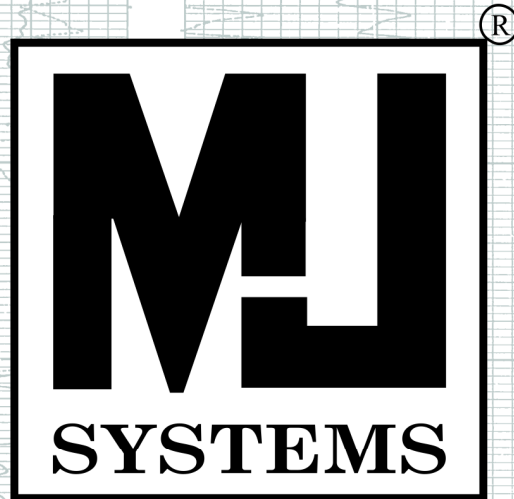
The KGF has an extensive collection of videos available for check-out at no charge.

Only pay for shipping back.

These are ideal for classroom or general public viewing.

See the web for titles & descriptions
www.kgfoundation.org

Call 316-265-8676
Ask for Janice to check out videos



Logs Since 1971

www.mjlogs.com

6 MILLION LOGS

DEPTH REGISTERED

**INTERNET
DOWNLOADS**

**ONLINE
SEARCH**

SEARCH AND FILTER BY DEPTH

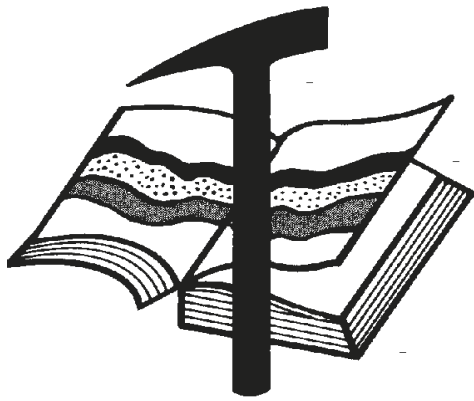
OWN THE LOGS

LogSleuth Software

CLUB WEB

WEB SITE CATALOGUE

1-800-310-6451



Kansas Geological Foundation

Web Site: www.kgfoundation.org

**212 North Market
Wichita, Kansas 67202**

A not-for-profit educational and scientific corporation

GOALS:

- promote geology and earth science
- preserve geological records
- establish memorials and endowments
- support field trips and seminars
- financial aid and grants to students

PLEASE HELP SUPPORT THE FOUNDATION

Kansas Geological Foundation Services

The Kansas Geological Foundation provides the following services as a part of the organization's commitment to educate the public regarding earth science.

Speaker's Bureau

A list of speakers available to talk about various aspects of geology may be obtained by contacting Janice Bright at the KGS Library, 265-8676. This service is free to the public.

DVD/Videotape Library

The KGF maintains a DVD & videotape library focused primarily on the various fields of earth science. These tapes may be checked out without charge by the public. To obtain a list of tapes, please contact the KGS Library, 212 N. Market, Ste. 100, Wichita, KS 67202, or call Janice Bright at 265-8676.

The Kansas Geological Foundation was founded in March, 1989 as a not-for-profit corporation under the guidelines of section 501(c)(3) of the tax code to provide individuals and corporations the opportunity to further the science of geology. It is dedicated to providing charitable, scientific, literary and educational opportunities in the field of geology for the professional geologist as well as the general public.

KGF can receive in-kind donations through which the donor may receive a tax deduction. Of equal importance, the KGF provides the financial resources to sort, process and file this data at the KGS library. If you have a donation to make, please contact the KGF at 265-8676.

Your tax-deductible membership donation helps to defray the cost of processing donations and to support public education programs about the science of geology. Annual membership begins at \$50.00 per year. Donations of \$100.00 or more are encouraged through the following clubs:

Century Club	\$ 100 to \$ 499
\$500 Club	\$ 500 to \$ 999
Millennium Club	\$1000 to \$5000
President's Club	\$5000 and over

WESTERN KANSAS
SOUTHERN NEBRASKA



EASTERN COLORADO
OKLAHOMA & TEXAS PANHANDLES

10 Drilling Rigs

10 Well Service Rigs & Roustabout Services

For contract information, please contact:
Blaine Miller / Drilling Department
316-858-8607 (Direct) or 316-267-3241

For contract information, please contact:
Alan Hays, Well Service Sprvsr.
785-421-2103 or 785-567-8739 (cell)

250 N. Water #300—Wichita, KS 67202

East Highway 24—Hill City, KS 67642

DUKE
DRILLING COMPANY

ROTARY DRILLING CONTRACTOR

620 Hubbard PO Box 823
Great Bend, KS 67530
Phone 620-793-8366

100 S. Main, Ste. 410,
Wichita, KS 67202
Phone 316-267-1331
Fax 316-267-5180

TIMOTHY J. SANDERS
tsanders@tomcatdrilling.com
CELL (316) 259-1652

WWW.TOMCATDRILLING.COM

TOMCAT DRILLING LLC

CORPORATE OFFICE
8301 E. 21ST NORTH, SUITE 360
WICHITA, KANSAS 67206
PHONE (316) 262-8554
FAX (316) 267-0749

FIELD OFFICE AND YARD
225 NW HIGHWAY 270
WOODWARD, OKLAHOMA 73801
PHONE (580) 254-3026
FAX (580) 254-3028

5 ROTARY RIGS SERVING
OKLAHOMA, KANSAS AND
THE TEXAS PANHANDLE

Great Bend (620) 793-5861 Ness City (785) 798-3843 Medicine Lodge (620) 886-5926

Acidizing Available at Medicine Lodge District

Russell (785) 483-2627 Oakley (785) 672-3452

2D & 3D Vibroseis Acquisition
ARAM*AIRES Seismic Recording System

1600 Broadway, Suite 1660 • Denver, CO 80202-4915
(303) 592-5220 • info@lockhartgeo.com
for complete information go to: www.lockhartgeo.com

MBC

WELL LOGGING & LEASING
UNMANNED GAS DETECTORS
MUD LOGGING
CERTIFIED INSTRUMENT TECH

AUSTIN GARNER **MARLA GARNER**

24-HOUR PHONE (620) 873-2953
MEADE, KANSAS

FULL LINE SUPPLY STORE
With Pump Shop, New & Used Pipe,
Equipment and Fittings
Exclusive S-55 casing source

STORES:

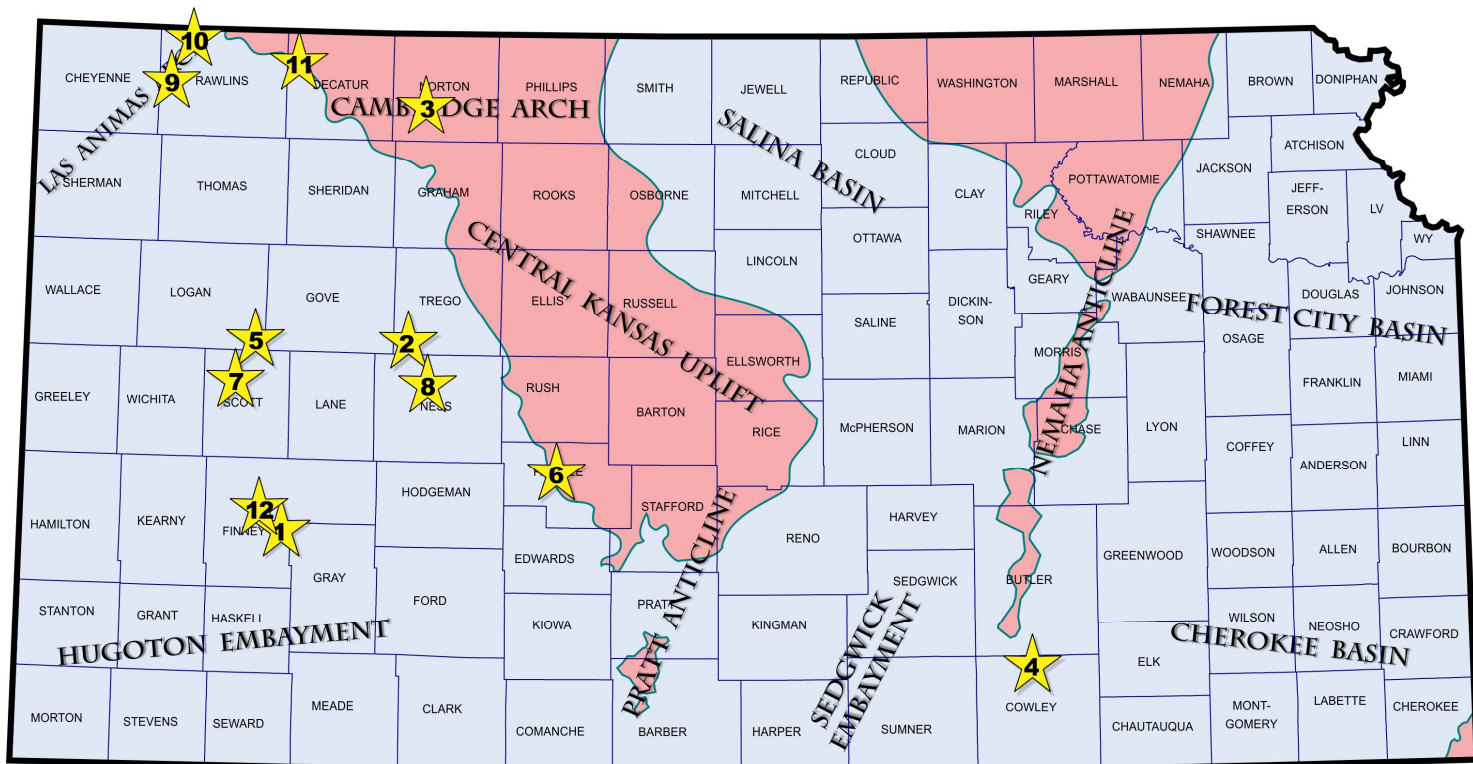
Chanute, KS	620-431-6500	Ness City, KS	800-589-5733
El Dorado, KS	316-321-9323	Osawatomie, KS	913-755-2297
Garden City, KS	877-976-1700	Spivey, KS	620-532-5261
Hays, KS	785-650-0199	McCook, NE	308-345-1542
Hugoton, KS	620-428-6604		

SALES OFFICES:

Wichita, KS	800-777-7672	Denver, CO	303-349-8417
Williston, ND	701-570-9255		

Exploration Highlights

By John H. Morrison, III
Independent Oil & Gas



1 • American Warrior, Inc., Garden City (KS), has discovered Mississippian (Saint Louis) oil reserves at the 3-23 Irsik-Finney (API 15-055-22305), located in the SW SW NE of section 23- T24s- R31W, Finney County. The new pool discovery well found crude deposits over three miles north of Mississippian oil production in the Pierceville field, which American Warrior also established earlier this year in section 2- T25s- R31W. Details are confidential. The 3-23 Irsik-Finney was drilled to a total depth of 5000 ft about eight miles east of Garden City, Kansas. The new oil field has not been named.

2 • Tengasco, Inc., Hays (KS), has established a new unnamed Mississippian oil field slightly over one mile north of the Splitter field in Trego County. The new reserves were discovered at the 1 Howard A (API 15-195-22955), NW SE NE in section 17- T15s- R25W, approximately eight miles north and four miles west of Arnold, Kansas. Operator hired American Eagle Drilling to drill the well to a total depth of 4378 ft. The Splitter field gave up around 17,000 barrels of oil from the Marmaton and Mississippian formations from 1971 to 1977. Mississippian pay was recovered from 4392 to 4478 ft in depth.

3 • Samuel Gary Jr & Associates, Inc., Denver (CO), has completed the 1-26 Hazlett Etal (API 15-137-20698) as a commercial well producing crude oil from the Shawnee (Toronto) and Lansing-Kansas City formations. The wildcat well (new pool discovery) was drilled to a total

depth of 3950 ft at site located in the NW NW SE of section 26- T4s- R24W, about four miles north of the town of Lenora, Kansas in Norton County. Closest known production in the vicinity of the new find lies over three miles away in the Lenora field (1976, LKC oil). The new field is unnamed at this time.

4 • Alton Oil LLC, Winfield (KS), is pumping an unknown amount of crude from the Mississippian formation at their 1 Jack (API 15-035-24556), spotted in the NE NW NW of section 21- T30s- R5E, in Cowley County. The wildcat pool opener was drilled to a total depth of 3190 ft by Ron Gulick Drilling tools at site located about three miles north and one mile west of Wilmot, Kansas. Lease lies three-quarters mile north of established production in the Nauman field (1982) which produces oil from both the Cherokee and Mississippian zones.

5 • Black Tea Oil LLC, Hays (KS), has explored nearly one and one-quarter miles north of established multiple-pay production in the Elkader Townsite field (2012) to discover new oil reserves in the Lansing-Kansas City and Cherokee formations. The firm's 1 DFK-1 (API 15-109-21304), NW SE NW in section 2- T15s- R32W, Logan County, is pumping an unknown amount of crude at site eight miles north and seventeen miles east of Russell Springs, Kansas. Landmark Drilling tools bottomed the well at a total depth of 3190 ft.

6 • Ritchie Exploration, Inc., Wichita (KS), has discovered Lansing-Kansas City oil deposits at the 1-X Biggs 21-D (API 15-145-21759) in Pawnee County. Operator drilled the 4550 ft deep well into Pre Cambrian rocks utilizing Southwind Drilling tools. The well found the oil deposits over two miles from closest known production in the area. The Biggs well was drilled in the SW NE SE of section 21- T21s - R18W, or about one mile north and five miles east of Rozel, Kansas.

7 • New Gulf Operating LLC, Tulsa (OK), has discovered oil deposits in the Pennsylvanian Basal Sands at the 1-16 Muench (API 15-171-21074) exploratory well that was drilled in the SE/4 of section 16- T17s- R33W in Scott County. The new reserves are located nearly one and one-quarter miles northwest of the newly established Rudolph oil field, which Shakespeare Oil Company discovered last year with Cherokee and Morrow oil production in section 22. The Muench well was perforated from 4664 to 4671 ft. Total depth is 4815 ft. Field area lies about six miles northwest of Scott City, Kansas.

8 • Trans Pacific Oil Corporation, Wichita (KS), has stepped-out south of the Keilman South field (est. 1988, Marmaton and Mississippian oil) to find a separated feature containing oil deposits. Discovery was made at the 1-31 Rodie A (API 15-135-25795), spotted in the SE/4 of section 31- T17s- R24W in Ness County. The well was drilled to a total depth of 4370 ft. No completion details are available. The new unnamed field is situated seven miles northwest of Ness City, Kansas.

9 • Samuel Gary Jr & Associates, Inc, Denver (CO), has established a new unnamed oil field in Rawlins County with the completion of the 1-35 Fisher Cattle Company (API 15-153-21040). The wildcat well is producing an unknown amount of commingled crude from the Shawnee (Oread), Lansing-Kansas City and Marmaton (Altamont C and lower Pawnee) zones at well site in the SE/4 of section 35- T3s- R36W. Total depth is 4927 ft. The well is located over two miles east of multi-pay Celia South field (est. 1983), or four miles southeast of the town of McDonald.

10 • Murfin Drilling Company, Inc, Wichita (KS), reports a new Lansing- Kansas city oil discovery at their 2-21 Berdie (API 15-153-21029), spotted in the NE/4 of section 21- T1s- R35W in Rawlins County. The well is producing an undisclosed amount of oil about nine miles north of Beardsley, Kansas. The new reserves were found almost one mile east of another Murfin discovery - the Wilkinson North field (est. 1979) - in section 17. Company rotary tools bottomed the well at a total depth of 4470 ft. The new field has not been named.

11 • BlueRidge Petroleum Corporation, Enid (OK), is producing oil from the Lansing-Kansas City formation at the 1-15 May (API 15-039-21207) in Decatur County. The wildcat well establishes new production over one mile west of the Jording field (est. 1957, LKC oil), which produced a showing of oil for only a few months. The May lease is located in the SW/4 of section 15- T2s- R30W, or about twelve miles northwest of Oberlin, Kansas. Total depth is 4080 ft. No completion details are available at this time.

12 • BEREXCO, Inc, Wichita (KS), has a new oil discovery in Finney County. The 1-16 Hibbert (API 15-055-22320) is on pump at an unknown rate in the SE/4 of section 16- T23s- R32W, about four miles northeast of Garden City, Kansas. The Marmaton, Morrow and Mississippian Saint Louis zones were the primary zones of interest as indicated on the drilling permit, however, exact pay zone is not known. Total depth is 4950 ft. The discovery is situated about one and one-half miles east of the Congdon North field (est. 1986), where all the above mentioned zones have produced over 1.2 million barrels of crude over the past 28 years.

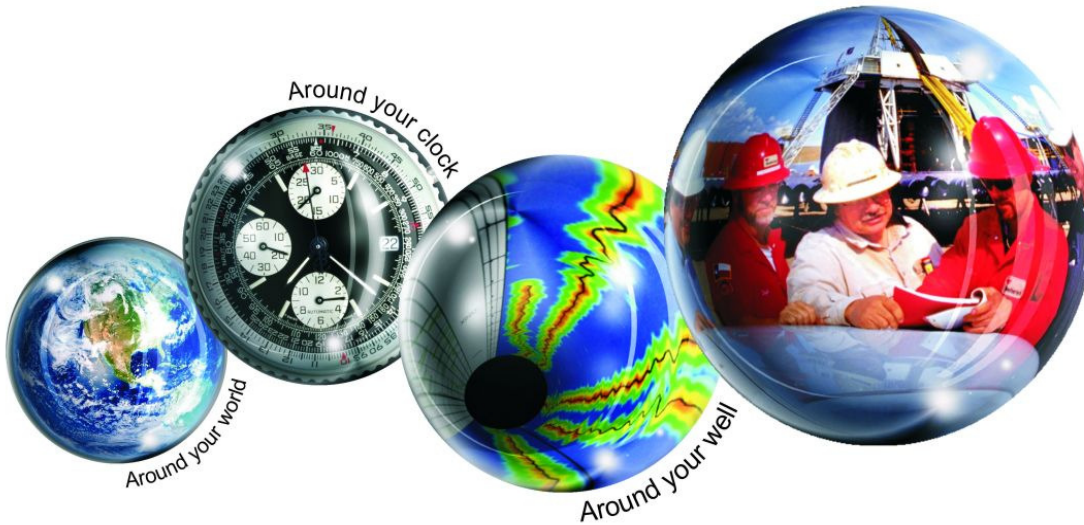


Kansas Geological Foundation Memorials

KGS Member	Date Deceased	Memorial Est.	KGS Member	Date Deceased	Memorial Est.
Dan Bowles	09/89	1990	Edward B. Donnelly	08/01	2001
John Brewer	10/89	1990	Richard P. Nixon	02/02	2002
George Bruce	08/89	1990	Robert W. Frensley	12/01	2002
Robert Gebhart	01/90	1990	Gerald W. Zorger	01/02	2002
Ray Anderson, Jr.	11/90	1990	Don L. Calvin	03/02	2002
Harold McNeil	03/91	1991	Claud Sheats	02/02	2002
Millard W. Smith	08/91	1991	Merle Britting	2002	2002
Clinton Engstrand	09/91	1991	Harold Trapp	11/02	2002
M.F. "Ted" Bear	10/91	1991	Donald M. Brown	11/02	2003
James & Kathryn Gould	11/91	1991	Elwyn Nagel	03/03	2003
E. Gail Carpenter	06/91	1993	Robert Noll	09/03	2003
Benton Brooks	09/92	1992	Benny Singleton	09/03	2003
Robert C. Armstrong	01/93	1993	Jay Dirks	2003	2003
Nancy Lorenz	02/93	1993	J. Mark Richardson	02/04	2004
Norman R. Stewart	07/93	1993	John "Jack" Barwick	02/01	2004
Robert W. Watchous	12/93	1993	Richard Roby	03/04	2004
J. George Klein	07/94	1994	Ruth Bell Steinberg	2004	2004
Harold C.J. Terhune	01/95	1995	Gordon Keen	03/04	2004
Carl Todd	01/95	1995	Lloyd Tarrant	05/04	2004
Don R. Pate	03/95	1995	Robert J. "Rob" Dietterich	08/96	2004
R. James Gear	05/95	1995	Mervyn Mace	12/04	2004
Vernon Hess	06/95	1995	Donald Hoy Smith	04/05	2005
E. K. Edmiston	06/95	1995	Richard M. Foley	06/05	2005
Jack Rine	07/95	1995	Wayne Brinegar	06/05	2005
Lee Cornell	08/95	1995	Charles B. Moore	09/96	2005
John Graves	10/95	1995	Jack Heathman	05/06	2006
Wilson Rains	10/95	1995	Charles Kaiser	09/06	2006
Heber Beardmore, Jr.	09/96	1996	Rod Sweetman	08/06	2006
Elmer "Lucky" Opfer	12/96	1996	Karl Becker	10/06	2006
Raymond M. Goodin	01/97	1997	Frank Hamlin	10/06	2006
Donald F. Moore	10/92	1997	Marvin Douglas	12/06	2006
Gerald J. Kathol	03/97	1997	Robert W. Hammond	04/07	2007
James D. Davies	08/88	1997	Eldon Frazey	04/07	2007
R. Kenneth Smith	04/97	1997	Pete Amstutz	05/07	2007
Robert L. Dilts	05/97	1997	Charles Spradlin	05/07	2007
Delmer L. Powers	06/72	1997	Donald R. "Bob" Douglass	09/07	2007
Gene Falkowski	11/97	1997	Vincent Hiesch	11/07	2007
Arthur (Bill) Jacques	01/98	1998	Glen C. Thrasher	03/08	2008
Bus Woods	01/98	1998	Peg Walters	06/08	2008
Frank M. Brooks	03/98	1998	Theodore "Ted" Sandberg	07/08	2008
Robert F. Walters	04/98	1998	James Ralstin	11/08	2008
Stephen Powell	04/98	1998	Earl Brandt	04/09	2009
Deane Jirrels	05/98	1998	Walter DeLozier	05/09	2009
William G. Iversen	07/98	1998	Don D. Strong	01/10	2010
Ann E. Watchous	08/98	1998	John Stone	02/10	2010
W.R. "Bill" Murfin	09/98	1998	Craig Caulk	03/10	2010
Donald L. Hellar	11/98	1998	Joseph E. Moreland, Jr.	03/10	2010
Joseph E. Rakaskas	01/99	1999	Gene Garmon	03/10	2010
Charles W. Steincamp	02/99	1999	James F. Dilts	05/10	2010
Robert and Betty Glover	10/96	1998	Jerry Pike	05/10	2010
Howard E. Schwerdtfeger	11/98	1999	Donald Hollar	06/10	2010
W. W. "Brick" Wakefield	03/99	1999	Delbert Costa	08/10	2010
V. Richard Hoover	01/00	2000	John Tanner	08/10	2010
Warren E. Tomlinson	01/00	2000	William (Bill) Owen	09/10	2010
James A. Morris	01/00	2000	Harold (Hal) Brown	10/10	2010
Eric H. Jager	03/00	2000	Edmund G. Lorenz	11/10	2010
Kenneth W. Johnson	03/00	2000	Thomas E. Black	05/11	2011
Dean C. Schaake	03/00	2000	Wayne E. Walcher	07/11	2011
Fred S. Lillibridge	05/00	2000	Henry F. Filson	07/11	2011
Jerry A. Langrehr	07/00	2000	Thomas Ray	07/11	2011
Clark A. Roach	07/00	2000	Edgar E. Smith	09/11	2012
Floyd W. "Bud" Mallonee	10/00	2000	Marilyn Messinger	06/13	2013
Ralph W. Ruuwe	09/00	2000	Micheal Mitchell	9/13	2013
Robert L. Slamal	02/01	2001	Orvie Howell	11/13	2013
Jerold E. Jespersion	06/01	2001	James Thompson	11/13	2013
William A. Sladek	06/01	2001	Dick Rowland	09/13	2014
Harlan B. Dixon	06/01	2001			



Weatherford®



All Around You

Weatherford has always been driven by your needs.

Now, with the addition of Precision Energy Services we're continuing to build a world of skills, services and technologies that revolve – and evolve – around you.

The result?

An expanded global network of 25,000 people, 730 service bases and 87 manufacturing facilities in 100 countries.

This increased local knowledge and service is there to support you anywhere, anytime. From midday in the Middle East to midnight in the middle of nowhere.

And with greatly strengthened capabilities in the critical evaluation skills of directional drilling and wireline logging, we can do even more to improve the profitability and productivity of your wells.

To see how our sphere of services can work for you, visit www.weatherford.com or contact either your Weatherford or former Precision Energy Services representative.

Drilling | Evaluation | Completion | Production | Intervention

© 2006 Weatherford International Ltd. All rights reserved. Incorporates proprietary and patented Weatherford technology.

CHANGE SERVICE REQUESTED

KGS BULLETIN
 Jan.—Feb. 2015

January 2015

Sun	Mon	Tue	Wed	Thu	Fri	Sat	
					1	2	3
4	5	6	7 Tech Talk	8	9	10	
11	12	13 KGS Board	14	15	16	17	
18	19	20 Tech Talk	21	22	23	24	
25	26	27 Tech Talk	28	29	30 KGS Banquet	31	

February 2015

Sun	Mon	Tue	Wed	Thu	Fri	Sat
1	2	3 Tech Talk	4	5	6	7
8	9	10 KGS Board	11	12	13	14
15	16 President's Day Library closed	17 Tech Talk	18	19	20	21
22	23	24	25	26	27	28